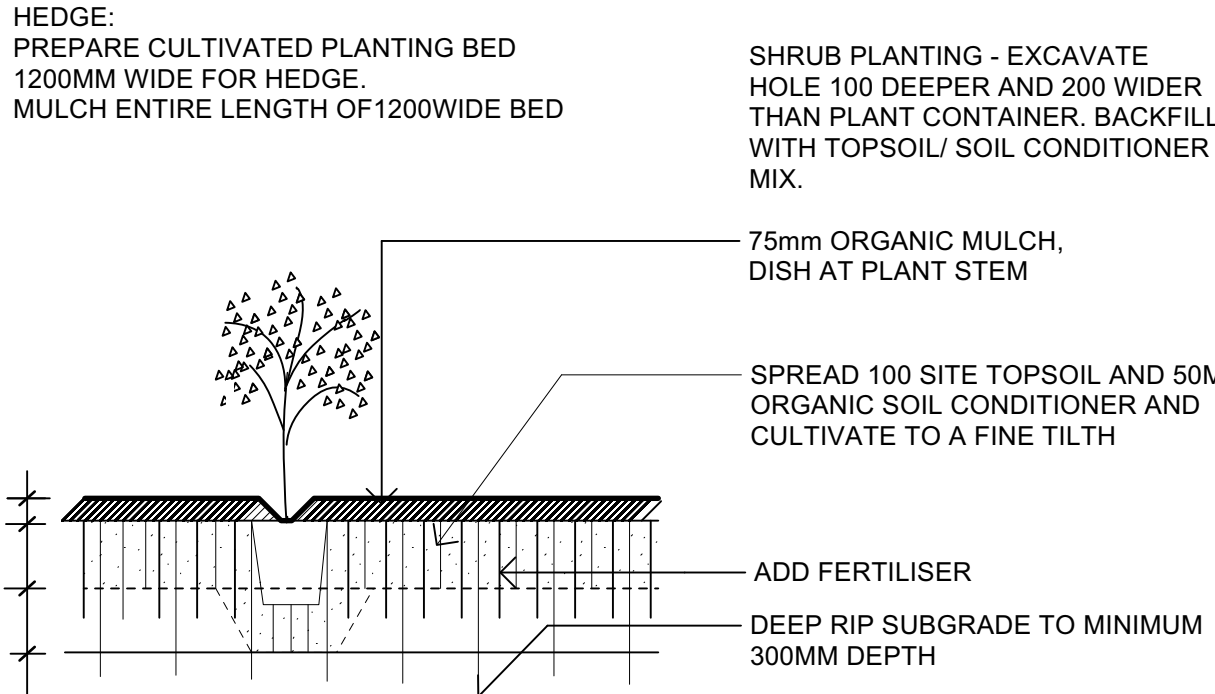
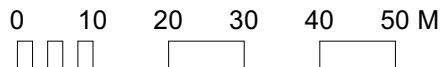
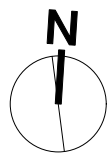


Plant List				
ID	Qty	Common Name	Botanical Name	Minimum Size
Trees				
Msou	3	Saucer Magnolia	Magnolia x soulangiana	75 litre
MaFl	29	Japanese flowering crabapple	Malus floribunda	45 litre
PrSeKw	8	Kwanzan Cherry	Prunus serrulata 'Kwanzan'	75 litre
PyCaBr	25	Bradford Pear	Pyrus calleryana 'Bradford'	45 litre
QuCo	8	Scarlet Oak	Quercus coccinea	75 litre
Shrubs				
AbGr	58	Glossy Abelia	Abelia x grandiflora	5 litre
PhFrRe	59	Red Robin Photinia	Photinia x fraseri 'Red Robin'	5 litre
Pit ten	53	Silver Sheen	Pittosporum tenuifolium Silver Sheen	5 litre

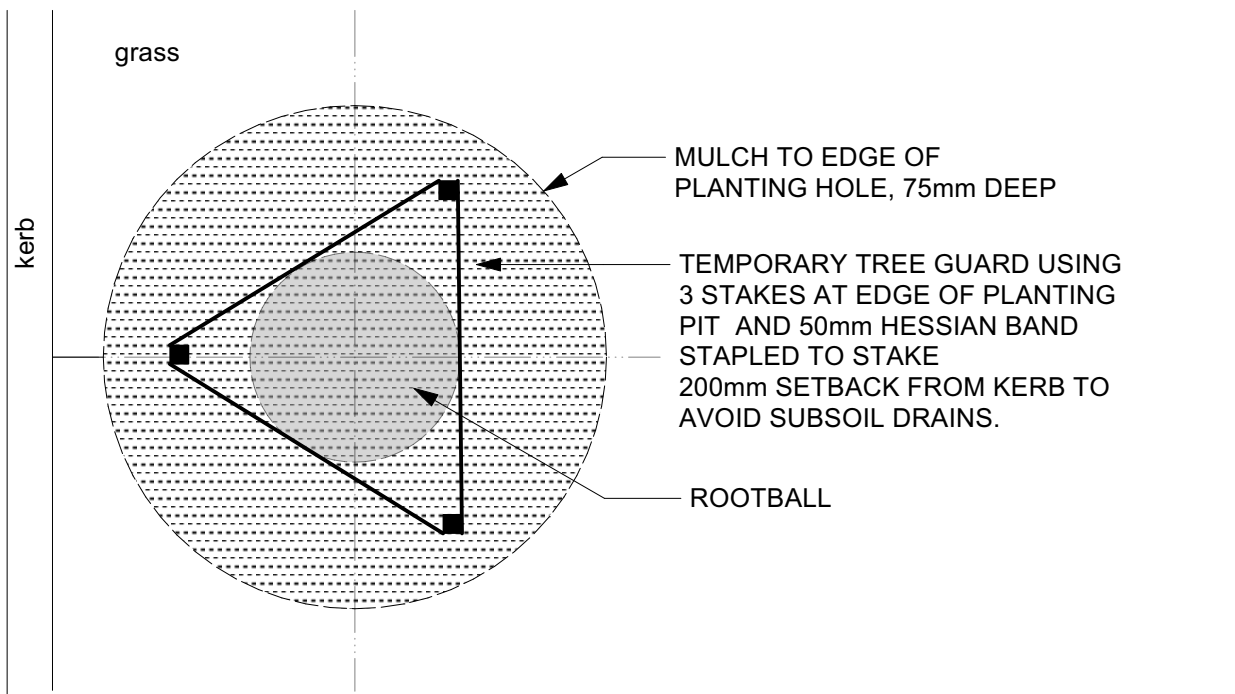


All street trees to be minimum 2m tall at time of planting. Where 45 litre tree is less than 2m tall, install minimum 2m tall 75 litre size tree.



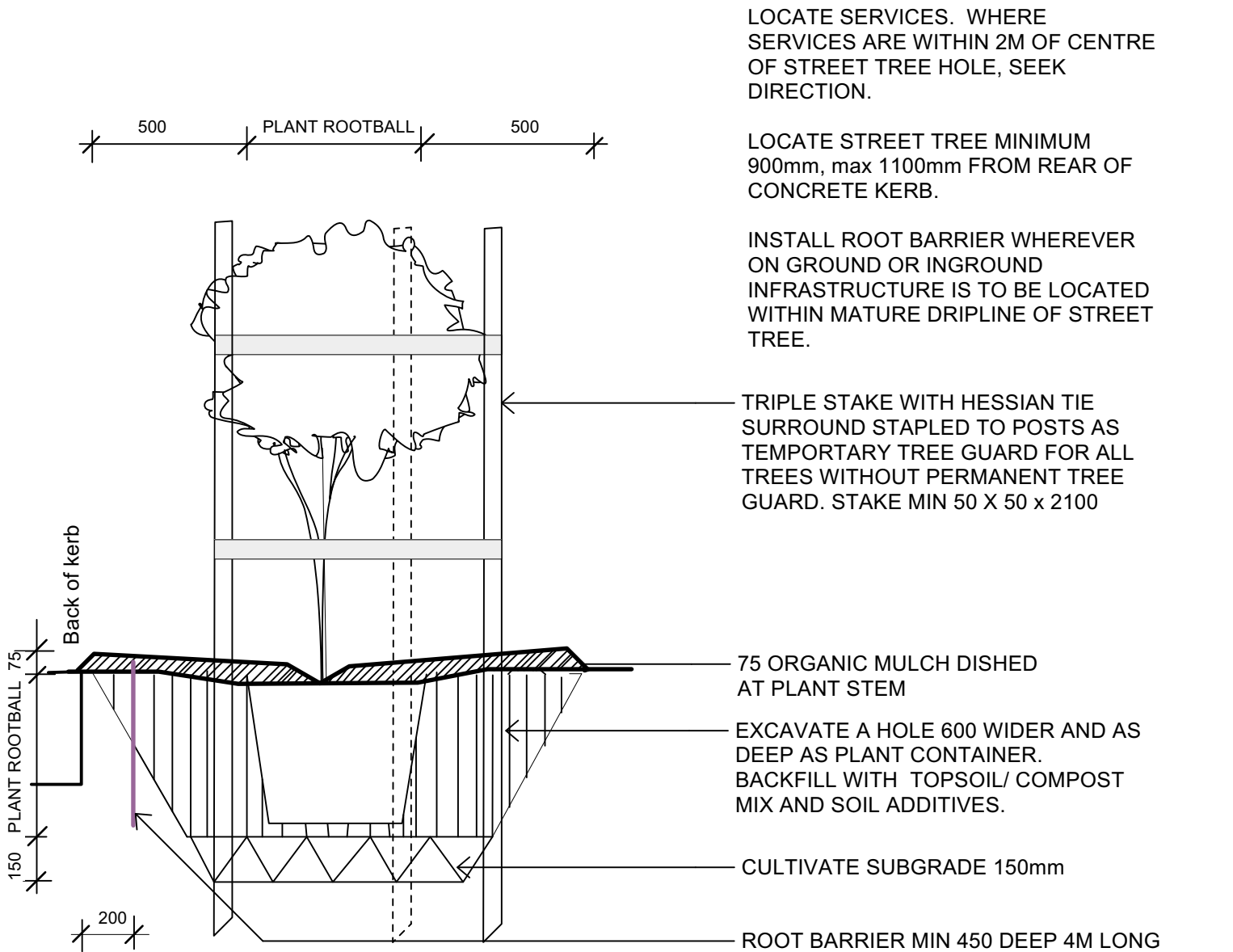
CULTIVATED PLANTING BED - HEDGE

1



STREET TREE PLANTING - 45 to 75 Litre

2



STREET TREE PLANTING - 45 to 75 litre

3

OUTLINE PLANTING SPECIFICATION

The Landscape Works are to be installed in accordance with Industry Best Practice by a suitably qualified and experienced horticultural professional, to the following minimum specification.

QUALIFICATIONS

All street trees are to be planted by horticulturalist with minimum AQF level 3 qualification in Horticulture (Parks and Gardens).

WEED ERADICATION:

Eradicate all noxious and environmental weeds using a non-residual spray at the recommended rate, by environmentally acceptable methods. All imported materials including plants, topsoil, compost and mulch shall be free of weeds or weed seed.

TOPSOIL

Install imported topsoil to depths shown in details. Soils for street tree planting to be 50% free draining coarse sand, 20% loam, 30% composted organic matter, with a neutral ph, to AS 4419.

MULCH

Organic mulch shall be free from deleterious and extraneous matter, including soil, weeds, rocks, twigs and the like. Mulch shall be equivalent to Eucy Mulch for street trees, as available from Goulburn Sand and Soil. Place mulch so it is not in contact with the stem of the plant.

STAKES AND TIES

Stakes to be 50 x 50 x 1800mm hardwood, straight, free from defects and pointed at one end. Drive 3 stakes, 600mm into ground, outside rootball. Staple 50mm hessian webbing to stake to create tree guard using staples. On windward side of tree, or as necessary to stabilise tree, fix 50mm hessian tie to stake in a continuous loop and staple to stake

FERTILISER

To each tree planting hole add slow release 21g biofertiliser planting tablet equal to Agsafe SuperMYCO (20:10:5 NPK). Quantity as per manufacturers recommendations.

PLANTS

Plants shall be vigorous, well established, hardened off, free from disease and insect pests, of good form consistent with species, not soft or forced, with large healthy root systems and no evidence of having been restricted or damaged. Trees to have single leaders and grown to NATSPEC specifications. All plant material shall be in minimum pot sizes as shown on schedule. No plant to be installed that has not been hardened off to local climatic conditions, or is otherwise inferior in quality.

HEDGE - CULTIVATED PLANTING BED

Cultivate strip 1200 wide and 300 deep. Add compost and mulch as detailed. Mulch entire 1200 wide strip for length of hedge.

PLANTING

Do not plant in extreme heat, cold, wind or rain. All plants are to be soaked thoroughly 1 hour prior to planting. Thoroughly water plants immediately after planting. Plant root systems are to be maintained moist at all times. Ensure surface of topsoil mixture grades to kerb. Excavate a hole for each plant 100 mm wider than plant container. Excavate a hole for each tree, backfill with topsoil, spread mulch and dish at plant stems, as detailed.

LANDSCAPE ESTABLISHMENT AND MAINTENANCE:

Plants: Maintain all plants in a healthy viable condition, including all watering, weeding, spraying for pests and diseases, pruning and re-mulching as necessary to achieve vigorous growth. Immediately replace any diseased plants at the Landscape Contractors cost. All plants are to be nurtured to industry best practice. All replacement plants are to be as originally specified.

Stakes: Stakes to be straightened and adjusted as necessary and removed when directed, or at the end of maintenance period.

Mulch: Maintain mulched surfaces and turf in a clean and tidy condition. Replace mulch where necessary with the same material to meet required depth.

Rubbish: Remove any rubbish that may occur during the maintenance period on a weekly basis.

Weed eradication: Regularly remove weeds by hand from all landscaped areas. Where necessary, use environmentally acceptable methods, such as a non-residual spray.

Watering: Water sufficiently to maintain continuous vigorous growth throughout the establishment period.

Soil Subsidence: Make good any erosion or soil subsidence that may occur. Ensure grass and mulched surfaces finish flush with adjacent paved surfaces.

MAINTENANCE PERIOD: 12 months from date of Practical Completion.

TYPICAL FENCE TYPES



Fence around Basin



Fence around reserve

ISSUE
A 2 March 2023
B 17 Nov 2023
C 20 feb 2024

issue for DA
Amended lot layout, community reserve. Existing trees added
Street trees added for Lots 547 - 552

Lindy Lean
LANDSCAPE ARCHITECT

FAILA Registered Landscape Architect #0423
HLS Pty Ltd PO Box 313 Ashfield NSW 1500
phone 0412 568 410
lindy@lilandscapearchitect.com.au



Cloverleigh Estate Stage 5
Tait And McDonald Streets Crookwell

For Darjeeling Pastoral

Landscape Street Tree Plan

L 01

1:1000 @A1

20 February 2024

status: For DA

ISSUE: C